



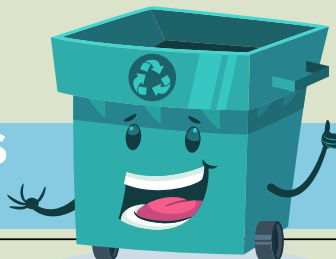
2022



MUNICIPALITY OF
SANTA TERESA
GALLURA

HOUSEHOLDS

TOWN - DISTRICTS SEA AREAS



| | | |
|-----------|----------------------|--------------------------|
| Monday | FOOD WASTE | |
| Tuesday | PAPER | |
| Wednesday | NON-RECYCLABLE WASTE | |
| Thursday | FOOD WASTE | GLASS 1/15 TINS AND CANS |
| Friday | PLASTICS | |
| Saturday | FOOD WASTE | |

SEA AREAS

Lu Pultiddolu, Baia Santa Reparata,
Terravecchia, Porto Quadro, Conca Verde,
La Marmorata, Valle dell'Erica

from 1° June To 30 September - high season

| | |
|----------------------|---------------|
| FOOD WASTE | GLASS |
| PAPER | PLASTICS |
| NON-RECYCLABLE WASTE | |
| FOOD WASTE | GLASS |
| PLASTICS | |
| FOOD WASTE | TINS AND CANS |

| GLASS (Collection in the 1 st , 3 rd , 5 th Thursday of the month) | January | February | March | April | May | June |
|---|---------|----------|-----------|---------|----------|----------|
| | 6-20 | 3-17 | 3-17-31 | 7-21 | 5-19 | 2-16-30 |
| TINS AND CANS (Collection in the 2 nd and 4 th Thursday of the month) | July | August | September | October | November | December |
| | 7-21 | 4-18 | 1-15-29 | 6-20 | 3-17 | 1-15-29 |
| | January | February | March | April | May | June |
| | 13-27 | 10-24 | 10-24 | 14-28 | 12-26 | 9-23 |
| | July | August | September | October | November | December |
| | 14-28 | 11-25 | 8-22 | 13-27 | 10-24 | 8-22 |

HOLIDAY COLLECTION SCHEDULE

Saturday, JANUARY 1, 2022: don't expose the waste bin

RURAL AREAS

| | NON-RECYCLABLE WASTE (every Tuesday) | PAPER (1 st Friday of the month) | PLASTICS (2 nd Friday of the month) | GLASS (3 rd Friday of the month) | TINS AND CANS (4 th Friday of the month) |
|-----------|---|--|---|--|--|
| January | 5-12-19-26 | 7 | 14 | 21 | 28 |
| February | 2-9-16-23 | 4 | 11 | 18 | 25 |
| March | 2-9-16-23-30 | 4 | 11 | 18 | 25 |
| April | 6-13-20-27 | 1 | 8 | 15 | 22 |
| May | 4-11-18-25 | 6 | 13 | 20 | 27 |
| June | 1-8-15-22-29 | 3 | 10 | 17 | 24 |
| July | 6-13-20-27 | 1 | 8 | 15 | 22 |
| August | 3-10-17-24-31 | 5 | 12 | 19 | 26 |
| September | 7-14-21-28 | 2 | 9 | 16 | 23 |
| October | 5-12-19-26 | 7 | 14 | 21 | 28 |
| November | 2-9-16-23-30 | 4 | 11 | 18 | 25 |
| December | 7-14-21-28 | 2 | 9 | 16 | 23 |

INFORMATION

IMPORTANT NOTICE

Put the bin outside your door on the public street, from **8.00 p.m. (20.00 h)** of the evening before the day shown on the calendar to **5.00 a.m.** of the day shown on the calendar.

SANITARY NAPKINS COLLECTION: SATURDAY

The additional collection of sanitary napkins will be performed (household users only) on Saturdays, if authorised by the competent office for the Urban Hygiene Service of their Municipality.



To use our services, download and try the Municipium App for Apple and Android devices right away.

The Municipium App features:

- A digital calendar in which you can set automatic alerts about which bins to put out for kerbside collection;
- The waste recycling glossary;
- The location and opening times of the waste recycling centres;
- How to book bulky item collections.



ECOCENTRO (MUNICIPAL RECYCLING CENTRE) LOCALITÀ BONCAMINU OPENING HOURS

From 1° June to 30 September

FROM MONDAY TO SATURDAY

From 8.00 a.m. to 1.00 p.m. (13.00 h)

From 5.00 p.m. (17.00 h) to 7.00 p.m. (19.00 h)

ON SUNDAY

From 11.00 a.m. to 1.00 p.m. (13.00 h)

From 1° October to 31 May

FROM MONDAY TO SATURDAY

From 8.00 a.m. to 1.00 p.m. (13.00 h)

BOOK THE BULKY WASTE COLLECTION SERVICE (max. 3 pcs at a time) AND REPORTS INEFFICIENCIES

FROM MONDAY TO FRIDAY:

From 8.30 a.m. to 1.00 p.m. (13.00 h)

From 3.00 p.m. (15.00 h) to 5.00 p.m. (17.00 h)

ON SATURDAY:

From 8.30 a.m. to 1.00 p.m. (13.00 h)

Free-phone:

800.530.980

For calls from mobile phones:

+39 075.5917125

COMMERCIAL WASTE

CALENDAR SORTED WASTE COLLECTION

2022



**MUNICIPALITY OF
SANTA TERESA
GALLURA**



**AMBIENTE
ITALIA**

**Unione dei Comuni
"ALTA GALLURA"**



From 1 October to 31 May - low season

| | | |
|-----------|----------------------|---------------|
| Monday | FOOD WASTE | GLASS |
| Tuesday | PAPER | TINS AND CANS |
| Wednesday | NON-RECYCLABLE WASTE | PLASTICS |
| Thursday | FOOD WASTE | GLASS |
| Friday | PAPER | TINS AND CANS |
| Saturday | FOOD WASTE | PLASTICS |
| Sunday | | |

From 1 June to 30 September - high season

| | | |
|------------|----------------------|---------------|
| FOOD WASTE | GLASS | PLASTICS |
| FOOD WASTE | PAPER | TINS AND CANS |
| FOOD WASTE | NON-RECYCLABLE WASTE | GLASS |
| FOOD WASTE | PLASTICS | TINS AND CANS |
| FOOD WASTE | PAPER | GLASS |
| FOOD WASTE | GLASS | TINS AND CANS |
| FOOD WASTE | | |

HOLIDAY COLLECTION SCHEDULE (Commercial waste)

Saturday, JANUARY 1, 2022: don't expose the waste bin

Monday, JANUARY 3: FOOD WASTE + GLASS + PLASTICS